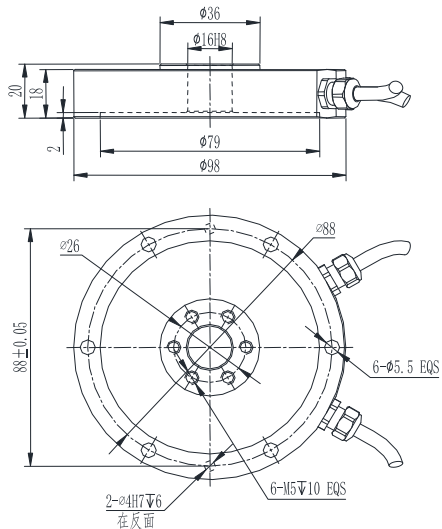


## Mounting Dimension



## T550

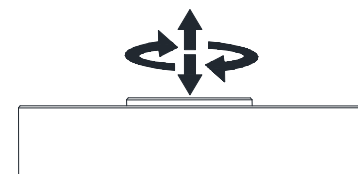


## Features &amp; Applications

- Compression & Torque Biaxial Sensor
- Interference errors of each signal is small
- Low profile, easy to install
- Dimension could be Customized
- Used for automotive press fit, automated assembly, 3C products testing, new energy product assembly, medical testing, robotics, mold assembly and other industrial testing and control system

Specifications	Technique
Capacity (N/N.m)	F: 20/30/50/100/200/500/1000/2000N M: 1/2/3/5/10/20/30/50N.m
Rated output	$1.0 \pm 10\% \text{mV/V}$
Zero balance	$\pm 2\% \text{F.S.}$
Non-linearity	$0.1\% \text{F.S.}$
Hysteresis	$0.1\% \text{F.S.}$
Repeatability	$0.1\% \text{F.S.}$
Interference error	$0.2\% \text{F.S.}$
Creep(30min)	$0.05\% \text{F.S.}$
Temp.effect on output	$0.05\% \text{F.S./}10^\circ\text{C}$
Temp.effect on zero	$0.05\% \text{F.S./}10^\circ\text{C}$
Input impedance	$350 \pm 10\Omega$
Output impedance	$350 \pm 10\Omega$
Insulation	$\geq 5000 \text{M}\Omega/100 \text{VDC}$
Recommended excitation	5~15V
Maximum excitation	20V
Compensated temp range	$-10 \sim 40^\circ\text{C}$
Operation temp range	$-20 \sim 75^\circ\text{C}$
Safe overload	150%F.S.
Ultimate overload	200%F.S.
Cable size	$\phi 4 \times 4000 \text{mm}$
Weight approx.	0.6kg
IP Class	IP66

## Load Direction



## Wiring Code

