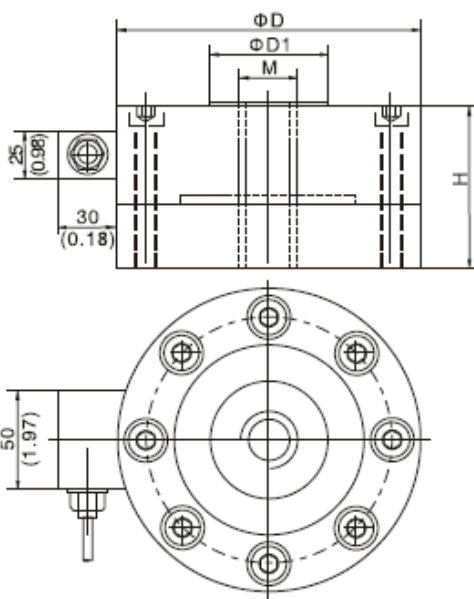


Features & Applications

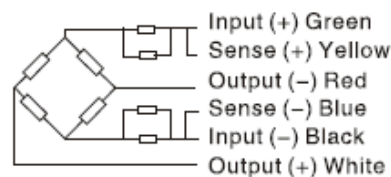
- Alloy steel, spoke type.
- Welding type, IP68.
- Suitable for electronic truck scales, hopper scale, automotive testing equipment and other force measuring fields.



Capacity	t	0.5/1/2/3/5/10/20/50
Output sensitivity	mv/v	2.0±0.002
Accuracy		C3
Maximum number of verification intervals	Nmax	3000
Minimum load cell verification interval	Vmin	Emax/7500
Combined error	(%FS)	±0.02
Creep	%F.S/30min	±0.016
Temperature effect on Sensitivity	(%FS/10°C)	≤±0.011
Temperature effect on Zero	(%FS/10°C)	≤±0.019
Zero Balance	(%FS)	±1.0
Input resistance	(Ω)	350±3.5
Output resistance	(Ω)	351±2
Insulation resistance	(MΩ)	≥5000(50VDC)
Excitation, recommended	(V)	5-12(DC)
Excitation, max	(V)	18(DC)
Temperature, operating	°C	-35 to 70
Temperature, compensated	°C	-10 to 40
Safe overload	(%FS)	150
Ultimate overload	(%FS)	300
IP		68



Dimension Capacity(t) (mm)	ΦD	ΦD1	H	M
0.5t ~ 2t	105 (4.13)	28 (1.10)	70 (2.76)	M14 × 2
3t, 5t	120 (4.72)	33 (1.3)	80 (3.15)	M20 × 1.5
10t, 20t	155 (6.10)	60.5 (2.38)	90 (3.54)	M32 × 2
50t	200 (7.78)	75 (2.95)	120 (4.72)	M45 × 3

**Wiring:**

Adopt shielded, 6 conductor cable: Φ5.6mm
Standard cable length: 5m